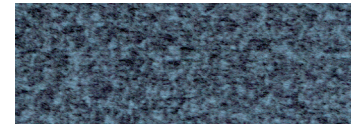




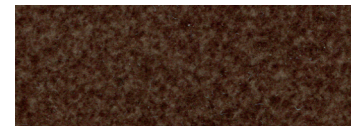
## Standard Fabrics:



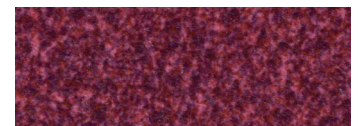
Calypso



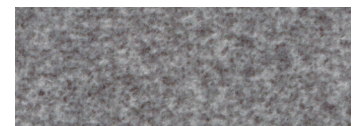
Camel



Hazelnut



Shiraz



Sterling

This fabric has a modern, updated look with rich color options. It features our exclusive SofTouch™ with Stain Defense coating.

\* An upcharge will apply for all crossover fabrics.

## Standard Features:

- Patented Twilight Tilt Technology
- Patented MaxiComfort® Positioning
- Adjustable Headrest
- Adjustable Lumbar
- Programmable AutoDrive™ Hand Control
- USB Charging Port
- Extra Pocket
- SmartTek® Diagnostic System

## Upgrade Options:

- Deluxe Therapeutic Heat & Vibrating Massage

**Cloud**  
**PR515**



*Comfort Zone*™  
by GOLDEN

The Cloud™ is a luxury power lift recliner offering our unique, ergonomic seating system for long-term comfort and support. It features our custom bucket seat and plush backrest. Positioning options are endless with our 5-zone positioning system, which includes our patented Twilight Technology, patented MaxiComfort® Positioning, adjustable headrest and lumbar support. Healthy benefits include being able to elevate the feet above the heart while experiencing a feeling of weightlessness. Now available in two sizes!



# MAXICOMFORT® Series PR515

Model Number	PR515-SME	PR515-MLA
Size	Small/Med	Med/Large
Class II Medical Device	YES	YES
Weight Capacity	375 LBS	375 LBS
Positioning	Twilight	Twilight
Comfort Zone(s)	5	5
Twilight Technology	YES	YES
ZG+ Position	YES	YES
Chaise Seat	YES	YES
Pocketed Coil Seat	NO	NO
Back Type	Biscuit	Biscuit
Removable Back Type	Quick Release	Quick Release
Head Rest Cover	Standard	Standard
Arm Rest Covers	NO	NO
Overall Width	35.5"	39.5"
Overall Height	44"	46.5"
Seat Width	23.5"	23.5"
Floor to Top of Seat	20"	21.5"
Seat Depth	18.5"	20"
Seat to Top of Back	28"	31"
Seat to Top of Arm	8"	8.5"
Distance Required from Wall Reclined	23"	24"
Extension Reclined from Back of Seat to End of Foot Rest	43"	43"
Life Time Warranty, Chair Frame, Lift Frame, Recline Mechanism	YES	YES
Warranty on Electrical parts	3 YR	3 YR
Pro Rated Years 4 Thru 7	YES	YES
Warranty on Mechanical Labor	3 YR	3 YR
Warranty on Electrical Labor	1 YR	1 YR
Hand Control Routing	Inside Pocket	Inside Pocket
Extra Pocket Option	Standard	Standard
Heat & Vibrating Massage Option	YES	YES
HeatWave Technology Option	YES	YES
Articulating Headrest Option	Standard	Standard
Power Adjustable Lumbar Option	Standard	Standard
Foot Rest Extension Option	YES	YES
Straight Lift Option	Standard	Standard
USB Charging Port	Control Box	Control Box
Battery Backup	Lithium ion	Lithium ion
SmartTek Diagnostic System	Standard	Standard
Place of Origin	USA	USA



# TWILIGHT

The World's Most Advanced  
Power Positioning Lift Recliner  
with Patented Twilight Technology!



Shown in Camel

### HEALTHY BENEFITS:

- Elevates Feet Above Heart
- Supports Natural 'S' Shape of Spine
- Alleviates Pressure On Lungs
- Available in Luxurious Brisa® Fabrics With Breathable Technology
- Distributes Weight
- Relieves Pressure Points
- Encourages Proper Posture



## Comfort Zone™

by GOLDEN

**Comfort Zones 1 - 5** This positioning system incorporates all five adjustable comfort zones to create the ultimate wellness comfort experience with our patented Twilight Technology. Each Comfort Zone can be adjusted independently by using the exclusive AutoDrive™ hand control.



WE PATENTED CO

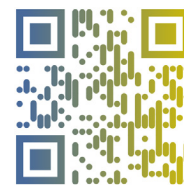
MEDmobility



Literature is current at time of printing. Golden Technologies reserves the right to make changes to the product or literature at any time.

Sizes may vary depending on fabric, filling material, upholstery and carpet thickness. All measurements taken on concrete floor using levels and metal rulers.

5711 - Calgary Trail NW  
Edmonton AB T6H 2K1  
P: 780-437-3300  
[www.medmobility.ca](http://www.medmobility.ca)



Scan with your smartphone camera to learn more about Comfort Zone by Golden.



Phone: 800-624-6374  
1-800-624-5165

MEDmobility.com

12604-118 Ave  
Edmonton AB T5L 2K8  
P: 780-451-5445  
[www.medmobility.ca](http://www.medmobility.ca)



SHT-PR515-011224